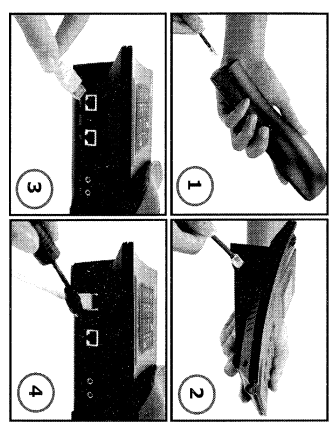


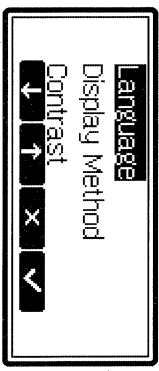
## How to connect your snom 105

- First connect one end of the handset cable to the handset and then to the jack on the left-hand side of the phone.
- Plug in one end of the Ethernet (network) cable into the RJ45 (LAN) connector and the other end into the network side to establish a data link.
- If you are using an extra power supply please insert the plug of the power supply into the connector next to the data line and hook up the casing into the mains.



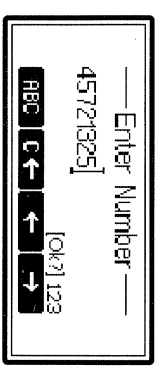
## Selecting the language

- Press the menu key and then go to the submenu "Settings" with or and press Enter to select this menu entry. Select "Base" and press , then go to "Language".  
Select the language and press .



## Dialing a phone number

- Telephone numbers, SIP addresses and IP/H.323 addresses can be entered via the numeric block.
- You will find the "@" symbol by pressing the numeric key "1" several times.
- Press to start the call.

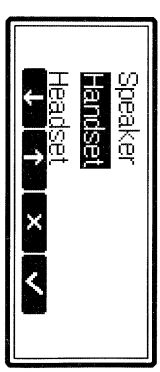
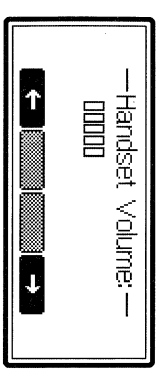


## Key mapping for input

- Moves the cursor left.
- Moves the cursor right.
- Deletes the character to the left of the cursor.
- Changes input mode to numbers.
- Changes input mode to capital letters.
- Changes input mode to small letters.

## Adjusting the volume

- While conducting a call you can use to invoke the volume control.
  - Reduces the volume in individual steps.
  - Increases the volume in individual steps.
  - Sets the volume and returns.
  - Returns without setting the volume.
- To adjust the volume via menu:
- Press menu key , "Settings"/"Tones".
  - Here the volume of the casing speaker, of the handset speaker or of the headset speaker can be adjusted.
  - Press to select.

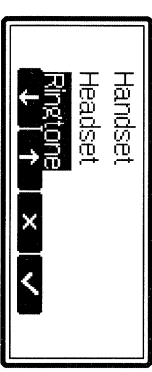


## Switching between headset and handsfree mode

- During a call it is possible to easily switch between the two modes:
- Switch to handsfree mode.
  - Switch to headset mode.
  - Accept incoming calls in headset mode.
  - Returns to the idle state.

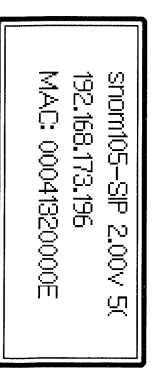
## Ring tones

- Via the menu "Settings"/"Tones" the following window (see left picture) is called up.
- Select the submenu "Ring Tones" to set the tone.
- Moves cursor to next ring tone.
- Moves cursor to previous ring tone.
- Activates the selection and returns
- Returns without changing the ring tone.



## Phone info "About"

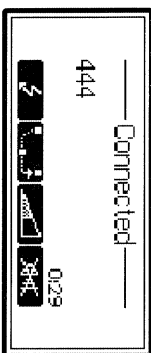
- Via the menu "Settings"/"About" the following window (see left picture) is activated.
- It indicates the type of phone, the software version, the MAC address and the current assigned IP address.





## Call transfer

- While a call is in progress, put the connected party on hold by pressing the hold key or .
- Press the transfer key and dial a number.
- Press to transfer call to the other party or to abort.



Scrolls the message forward.



Scrolls the message backward.



, hook off handset

Call mailbox to listen into recorded messages.



Back to idle screen.



## Safety notes

## Conference

- Scenario: Phone is connected with at least two calls, one is held and one is connected.
- Press function key and the second set of function keys is accessible.
- Press function key to connect all phones involved in a conference.
- Press function key to disconnect the conference.

## Checking your voicemail

- At the idle screen the small letter icon symbolizes new recorded messages.
- After pressing the function key the phone displays more information about the number of new and old but stored recorded messages.
- To connect the mailbox to listen into the recorded messages press function key or hook off the handset.



- Do not disassemble this unit.  
Opening this unit will void the product warranty.

- Power Supply:  
Power feeding over the network cable (PowerDine product family 4000 and 6000 as well as RedHawk product family 8400).  
An external power supply (48 V).

- Do not locate power and network cable where a person can step or trip on.

- Do not expose to humid environment

- Place this unit only on even, horizontal surfaces

- To clean the snom 105 use anti-static cloth.  
Do not use liquid cleaners.

The current product documentation can be obtained from our web site:

### User Manual and Data Sheet:

[http://www.snom.com/support\\_dl\\_en.php](http://www.snom.com/support_dl_en.php)

### FAQ's:

[http://www.snom.com/faq\\_en.php](http://www.snom.com/faq_en.php)

If you are facing problems installing your snom 105 VoIP phone, after reading the documentation inform our support: [support@snom.de](mailto:support@snom.de)